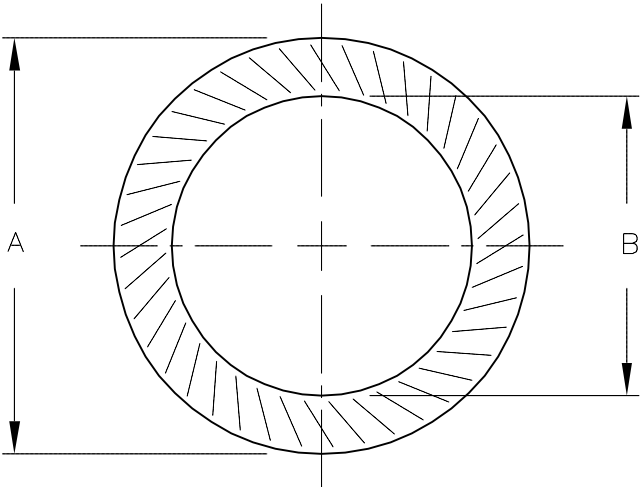


PART NUMBER	TURCK ID.#	BARREL DIA.	DIMENSIONS	
			A	B
LW-30	A3129	30 mm	$\frac{1.760}{44.8}$	$\frac{1.260}{32.0}$



NOTES:

1. FOR USE WITH THREADED BARREL SENSORS.

C	UPDATE MATERIAL & FINISH	NF	06/11/15	50249
REV	DESCRIPTION	BY	DATE	ECO NO.

RELATED DOCUMENTS 1. 2. 3. 4.	3RD ANGLE PROJECTION	THIS DRAWING IS CONFIDENTIAL AND THE PROPERTY OF TURCK INC. USE OF THIS DOCUMENT WITHOUT WRITTEN PERMISSION IS PROHIBITED.		<div> <div>3000 CAMPUS DRIVE MINNEAPOLIS, MN 55441 1-800-544-7769 (763) 553-7300 (763) 553-0708 fax turck.com</div> <div> <b>TURCK INC</b>  <i>High Technology Sensors and Automation Controls</i> </div> </div>	
	MATERIAL CARBON STEEL	DRFT RJP	DATE 3/23/93	DESCRIPTION LW-30 (5/BAG)	
	FINISH PHOSPHATE	APVD	SCALE NONE		
		UNIT OF MEASUREMENT <b>INCH [ MILLIMETER ]</b>		IDENTIFICATION NO. A3129	REV C
		DO NOT SCALE THIS DRAWING		FILE: A3129	SHEET 1 OF 1